

1 μm

Mag = 16.00 K X

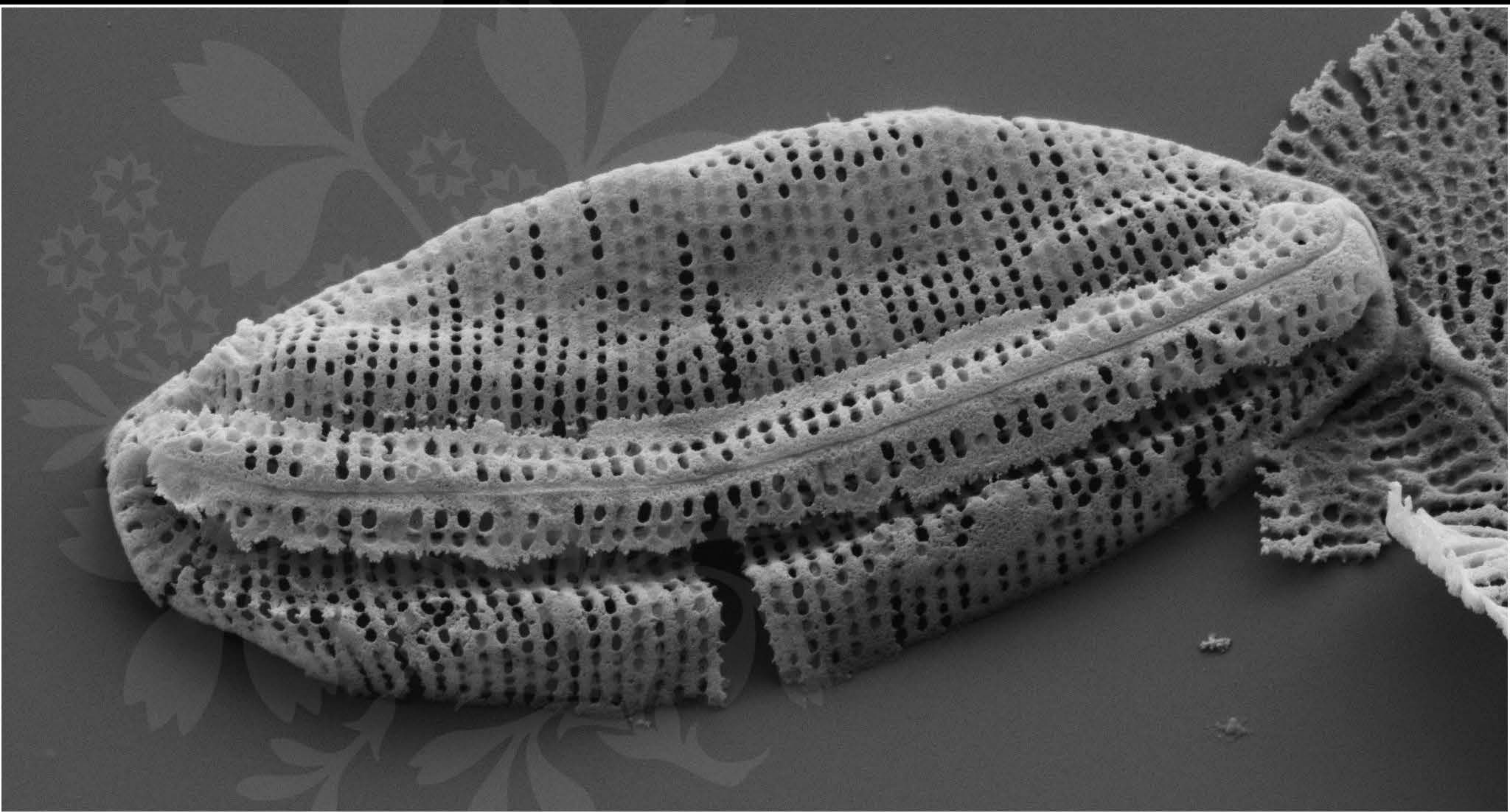
EHT = 5.00 kV

Signal A = SE2 Date :13 Jun 2017

WD = 4.4 mm

File Name = TCC707_01.tif





1 μm

Mag = 20.00 K X

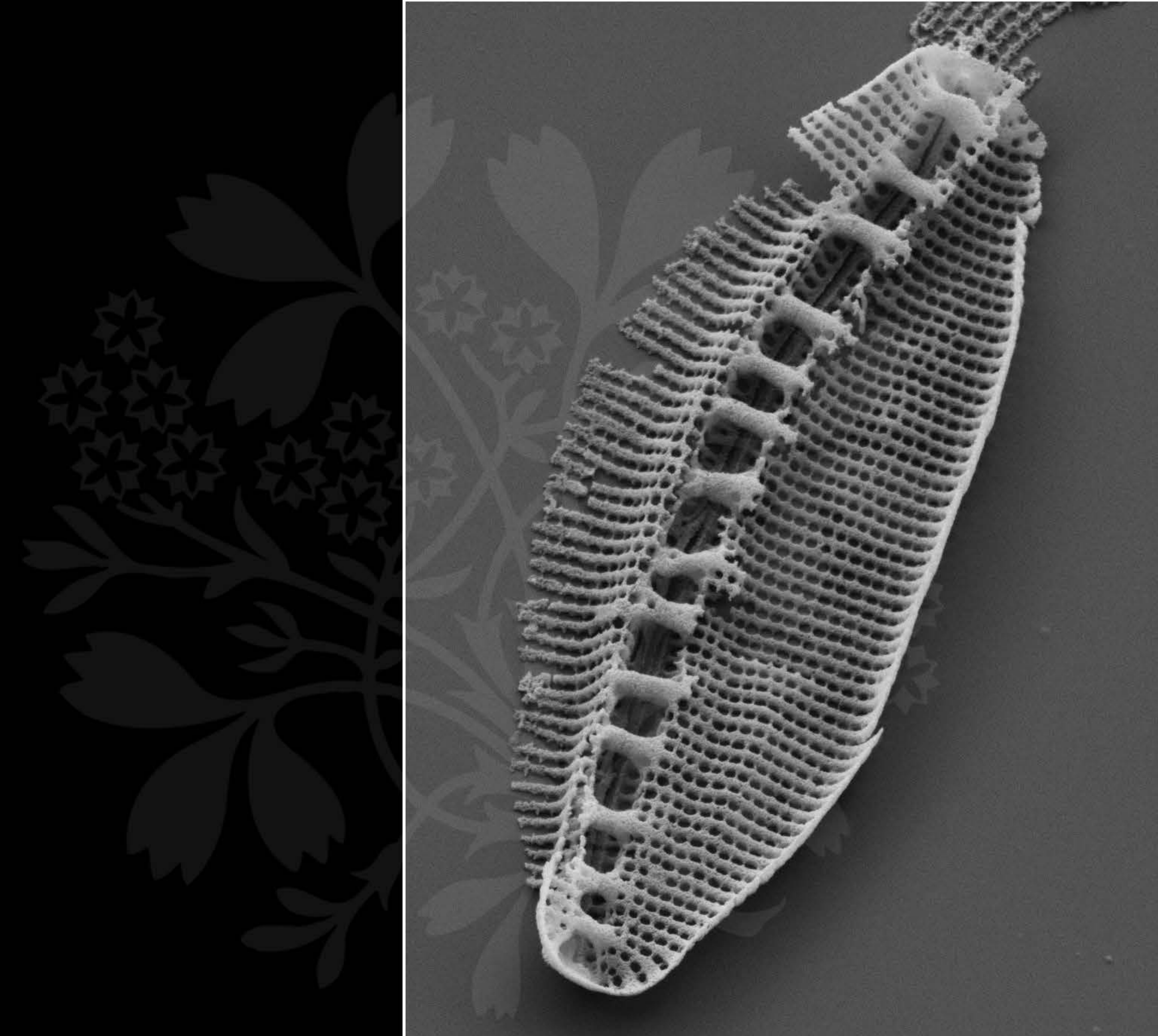
EHT = 5.00 kV

Signal A = SE2 Date :15 Jun 2017

WD = 4.4 mm

File Name = TCC707_02.tif





1 μm

Mag = 15.00 K X

EHT = 5.00 kV

Signal A = SE2 Date :15 Jun 2017

WD = 4.4 mm

File Name = TCC707_03.tif

